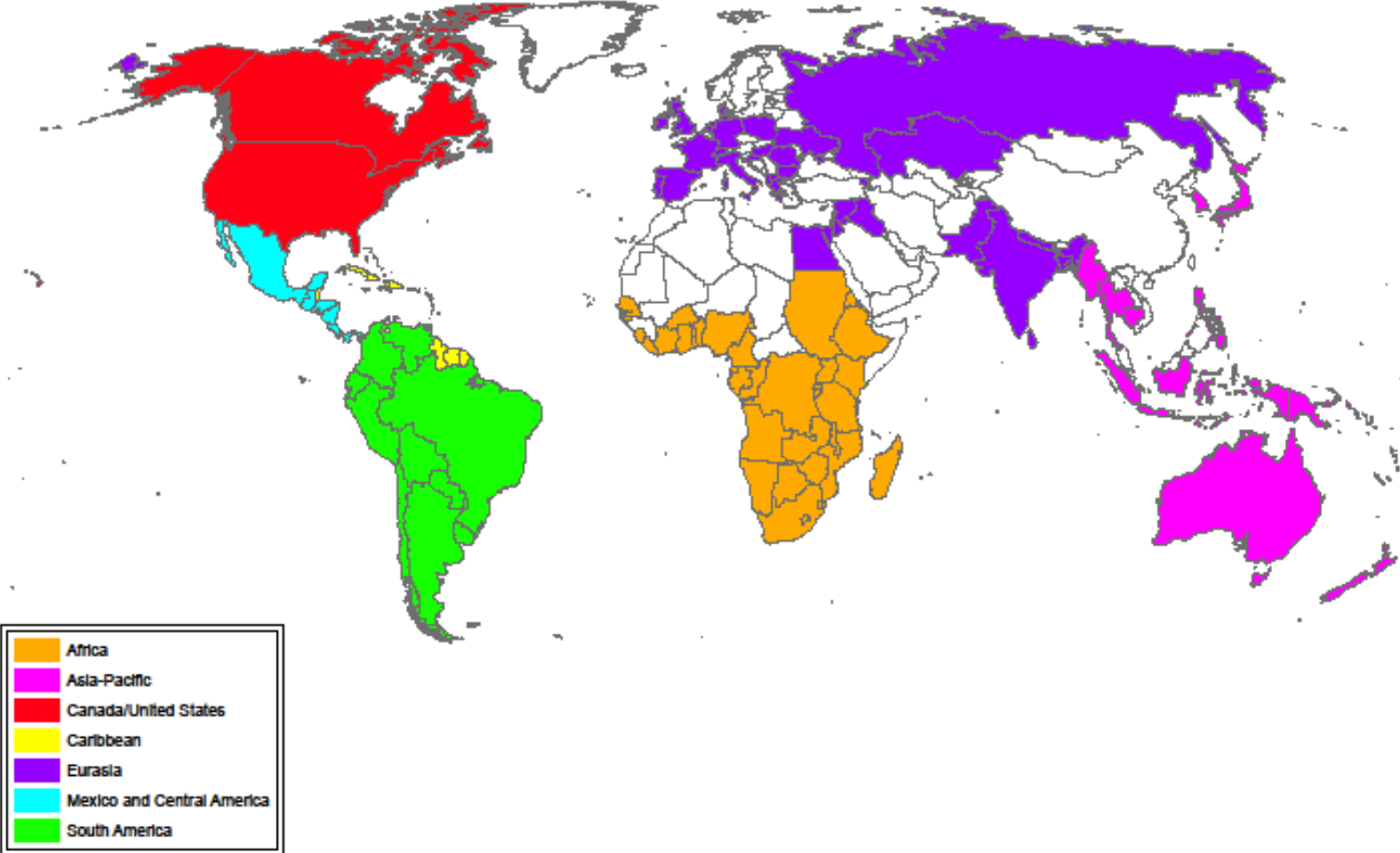


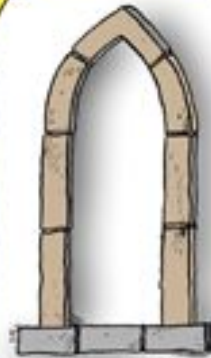
Nazarene World Areas



Auf die Vision kommt's an.



Ich behau
einen Stein.



Ich arbeite
an einem
Spitzbogen-
fenster.



Ich baue eine Kathedrale!





Praying



Discipling



Giving



Educating

Nazarene Missions
INTERNATIONAL

- Mission is not a one way street
- Mission is not limited to a small group in the church

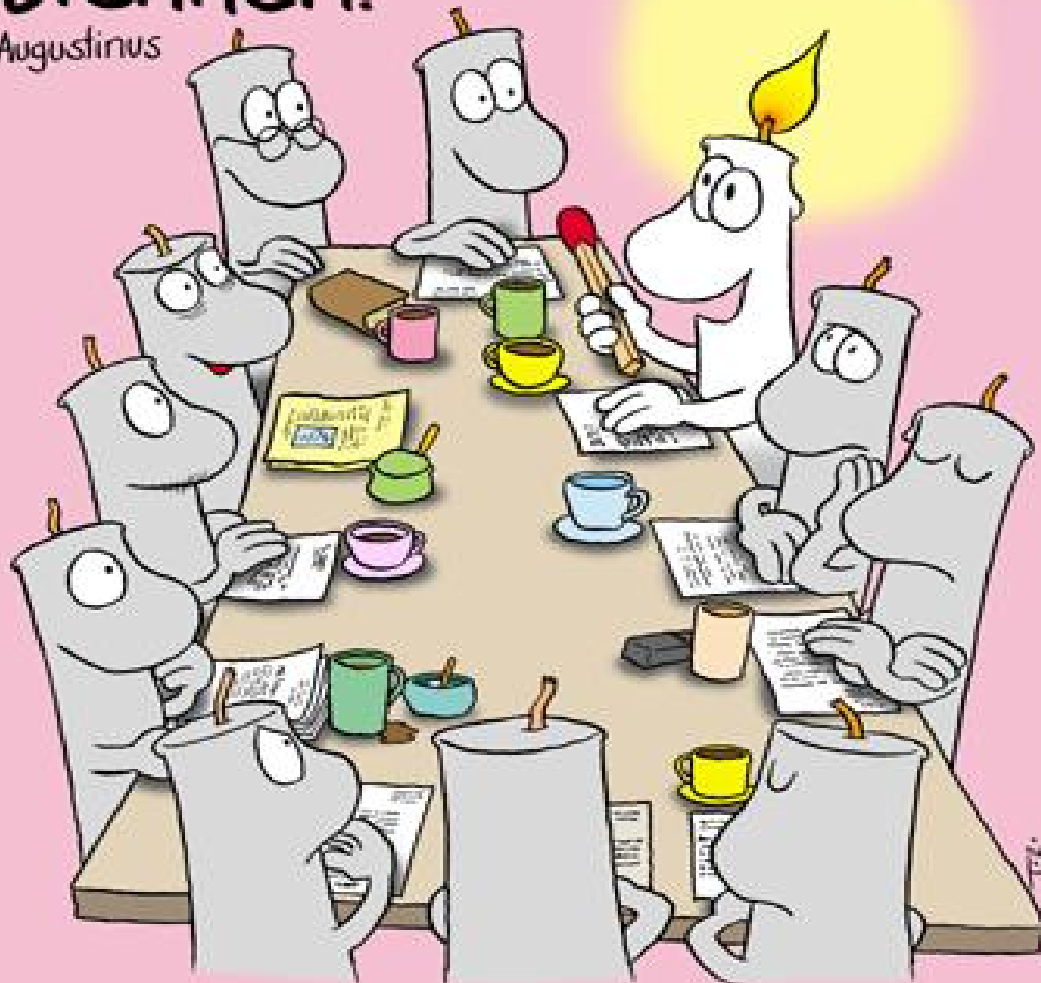
Mission education is more than information

It is motivation and
participation



Was du
entzünden willst,
muss in dir selbst
brennen.

Augustinus



Where to find information

- Internet:
- Websites
- Media library
- Face book/twitter
- Personal contacts
- What else

NMI Calendar of Emphases

Emphasis Each Month -- Prayer and Fasting

January — Volunteer Ministries

February — Alabaster

March — Easter Offering

(World Evangelism Fund, Faith Promise)

Special Prayer Emphasis — Nazarene World Week of Prayer

April — Mission Education

May — Missionary Health Care

Special Prayer Emphasis — Global Day of Prayer

June — World Mission Broadcast

NMI Calendar of Emphases

Emphasis Each Month -- Prayer and Fasting

July — International Ministry, Bible Schools & Seminaries

August — LINKS

September — Alabaster

October — Mission Priority One

Special Prayer Emphasis — 10/40 Window

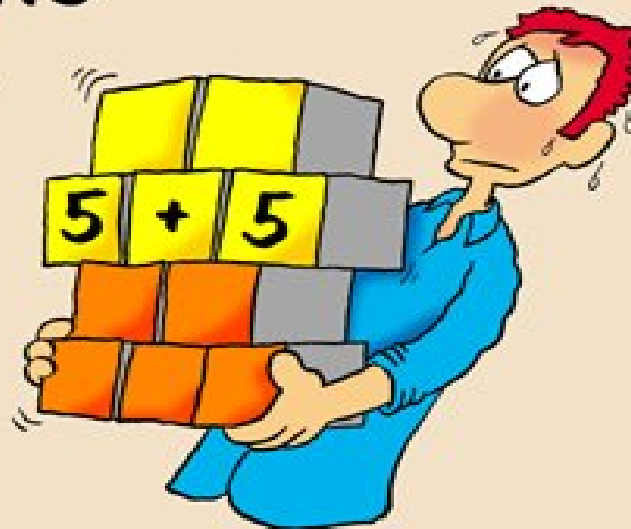
November — Thanksgiving Offering (World Evangelism Fund, Faith Promise)

Special Prayer Emphasis — International Day of Prayer for the persecuted church

December — Nazarene Compassionate

Ministries Disaster Fund, Child sponsorships

Wer alleine
arbeitet,
addiert.



Wer
zusammenarbeitet,
multipliziert.



Tibi

Es ist besser,
eine Kerze anzuzünden,
als über Dunkelheit
zu klagen.

